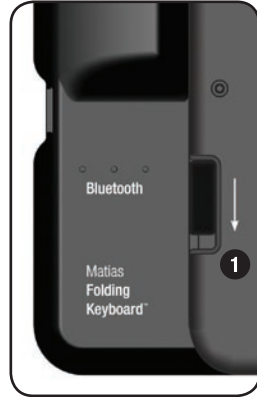


quick setup

1 Opening & closing the keyboard

To **open**, slide the open switch **down**.
To **close**, fold and press the two ends together.

REMEMBER to turn the keyboard OFF before you close it.



2 Insert batteries

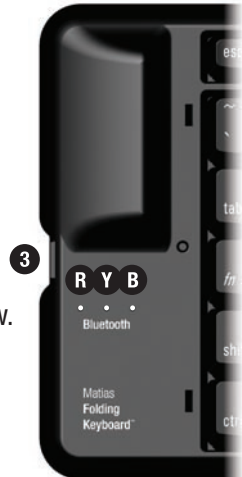
Batteries are included in the box. The battery compartment is located on the underside of the keyboard.

3 On/Off Button

Press the **On/Off button** 3 to turn the keyboard on – the **blue** light **B** flashes.

Press again to turn the keyboard off – the **yellow** light **Y** flashes.

If the **red** light **R** flashes, your batteries are low.



4 Bluetooth® setup

For Windows **Vista** please turn to **page 4**.

For Windows **XP** please turn to **page 13**.

For more information, please visit:

Technical support:

www.matias.ca/foldingkeyboard/support

Injury prevention and health:

www.matias.ca/health

Warranty information:

please turn to **page 22**.

Matias Corporation

129 Rowntree Dairy Road, Unit #20

Vaughan, Ontario, L4L 6E1

Canada

Telephone: 1-905-265-8844

e-mail: info@matias.ca

www.matias.ca



Copyright © 2008 Matias Corporation. All rights reserved. Matias Folding Keyboard, Matias Bluetooth Folding Keyboard, Matias, and the Matias logo are trademarks of the Matias Corporation. Windows XP and Windows Vista are trademarks of Microsoft Corporation. The *Bluetooth*® word mark and logos are registered trademarks owned by Bluetooth SIG, Inc. and any use of such marks by Matias is under license. Other names may also be trademarks and their owners are respectfully acknowledged. Patent Pending. Made in China.

Using the fn key

Fn key commands are printed on the keys in *italic*.

The **fn** key works just like Shift or Ctrl.

Hold down fn and then press the key that has the command you want.

Using Caps Lock

To turn Caps Lock on/off, simply hold down the **fn** key **1** and press the **/ ? caps lock** key **2**:

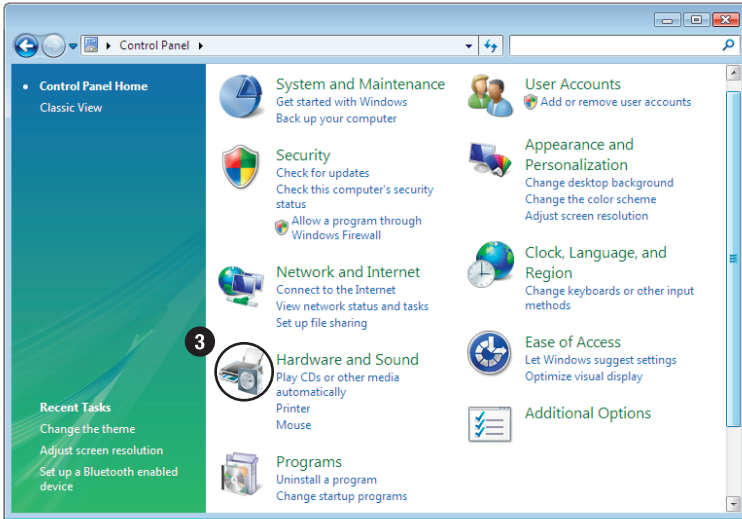


Windows Vista – *Bluetooth*[®] Setup Instructions

- 1 Click on the **Windows** button.
- 2 Click on **Control panel**.



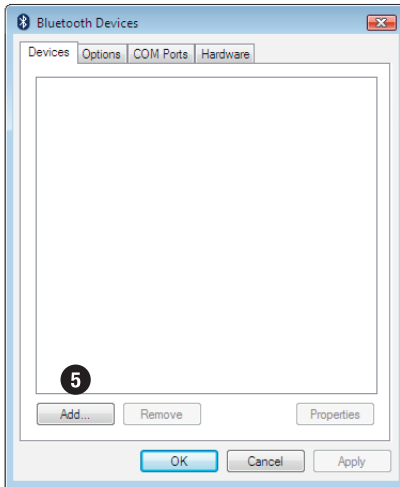
3 Click on **Hardware and Sound**.



4 Click on **Bluetooth Devices**.



5 Click **Add...**



- 6 Press the **On/Off button** 6 to turn the keyboard on.
The **blue light** B will flash briefly.

If the **yellow light** Y flashes, then press the button again.

If the **red light** R flashes or no light flashes, then you need to insert new batteries.



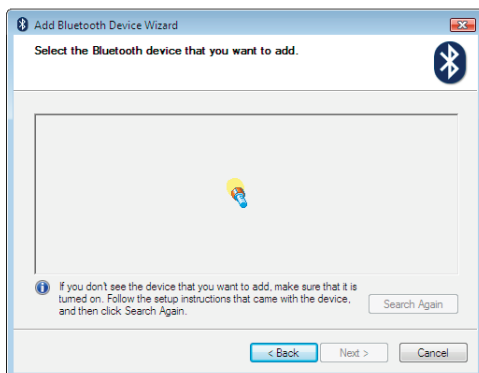
- 7 With a pen or similar pointed object, press the **pairing button** 7 until the **blue light** B flashes.

8 Click the check box.

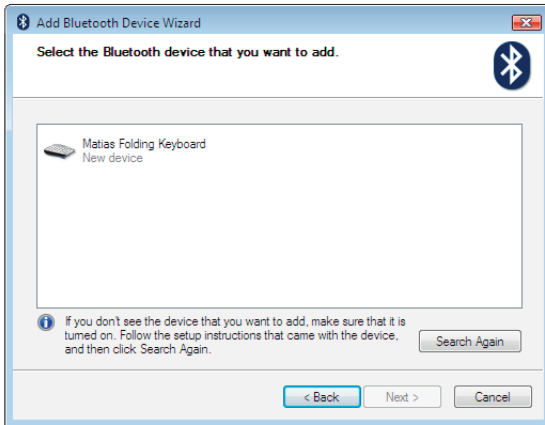
9 Click **Next**.



10 An animated flashlight will appear.

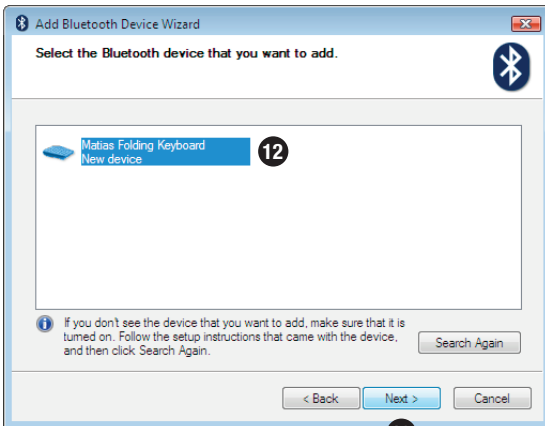


- 11 After a few moments, the keyboard will appear in the window.

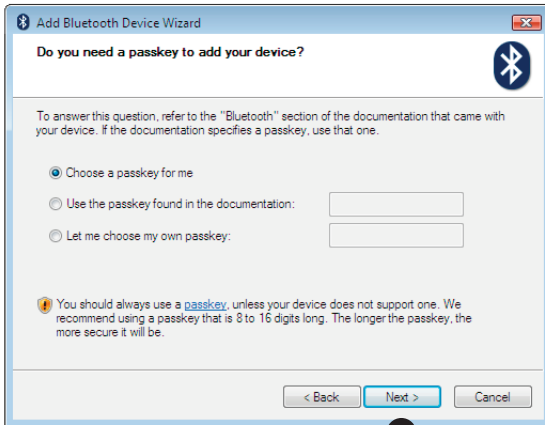


- 12 Click to select the keyboard.

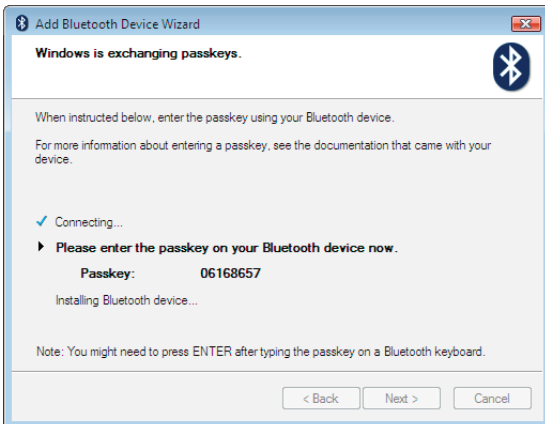
- 13 Click **Next**.



14 Click **Next**.



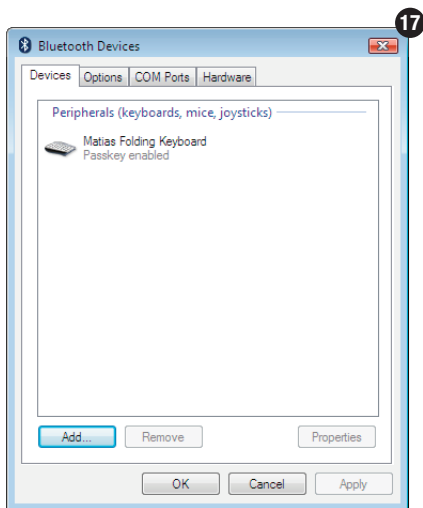
15 Type the passkey number **shown on your screen** using the keyboard, and then press the **Enter** key on the keyboard.



16 Click **Finish**.



17 Click the Close Window button.



18 Setup is complete.

See **page 3** for more information.

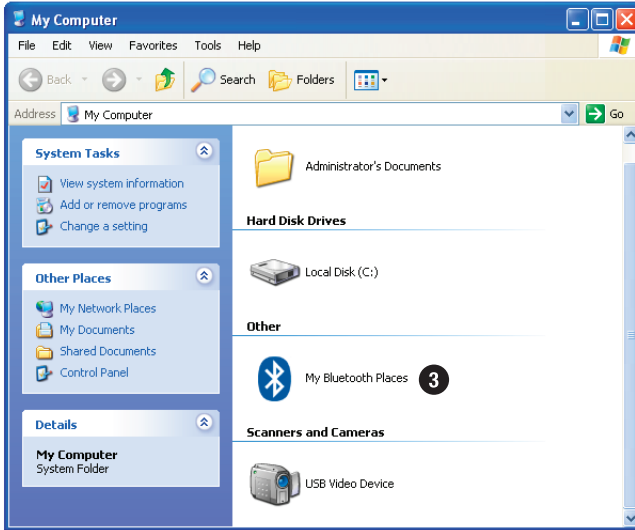
Windows XP – *Bluetooth*® Setup Instructions

- 1 Click on the **Start** button.
- 2 Click on **My Computer**.



1

3 Click on **My Bluetooth Places**.



- 4 Press the **On/Off button** 4 to turn the keyboard on.
The **blue light** B will flash briefly.

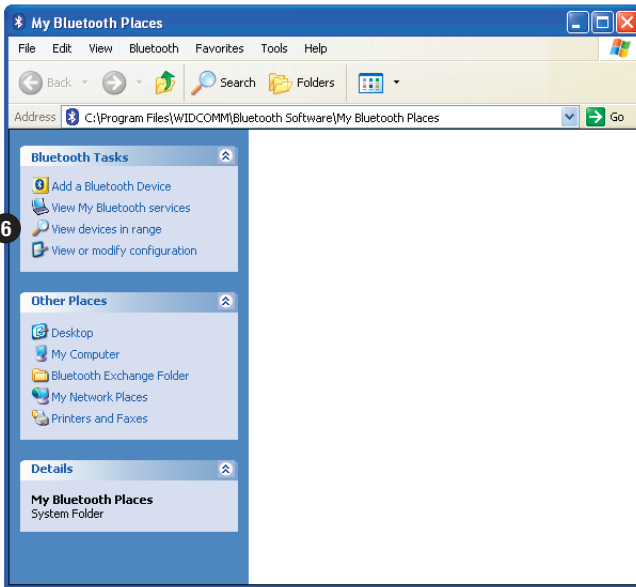
If the **yellow light** Y flashes, then press the button again.

If the **red light** R flashes or no light flashes, then you need to insert new batteries.

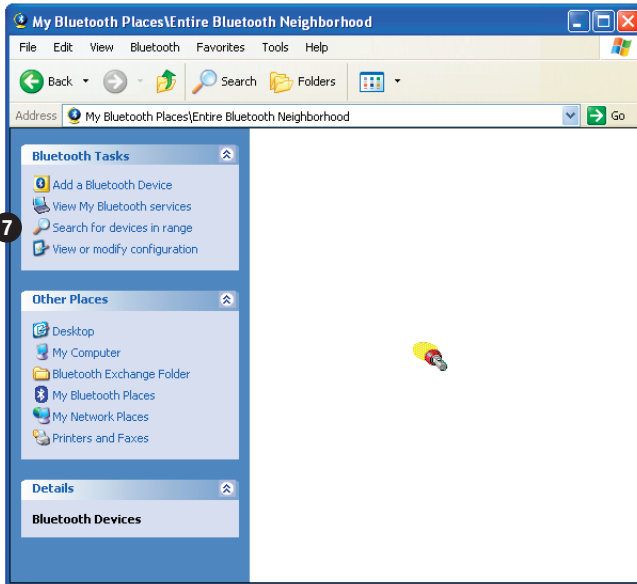


- 5 With a pen or similar pointed object, press the **pairing button** 5 until the **blue light** B flashes.

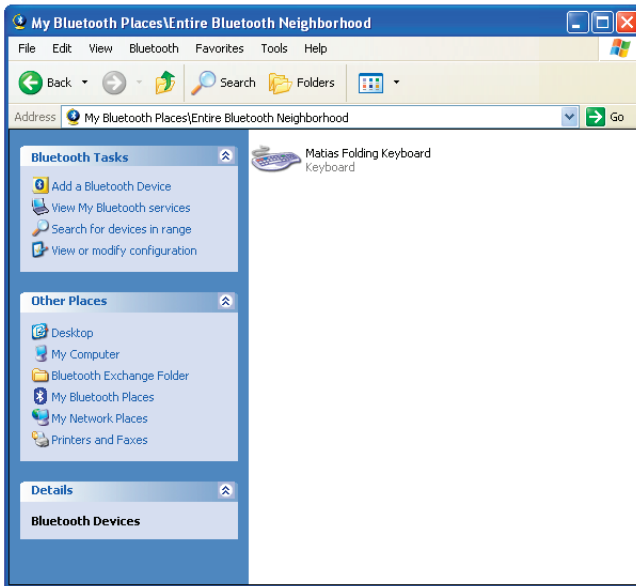
6 Click on **View Devices in Range**.



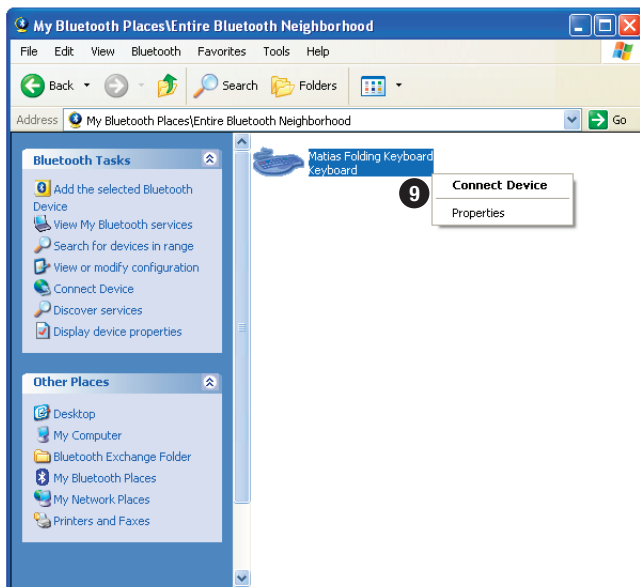
- 7 Click on **Search for Devices in Range**.
An animated flashlight will appear.



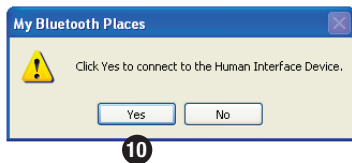
8 After a few moments, the keyboard will appear in the window.



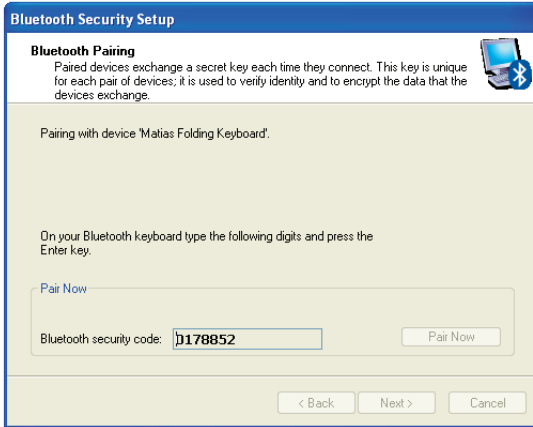
9 Right-click on the keyboard icon, then click on **Connect Device**.



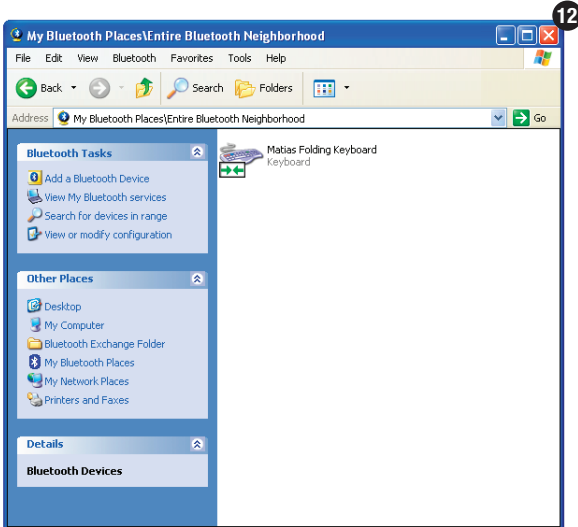
10 Click **Yes**.



- 11 Type the Bluetooth security code **shown on your screen** using the keyboard, and then press the **Enter** key on the keyboard.



- 12 Click the Close Window button.



13 Setup is complete.

See **page 3** for more information.

MATIAS FOLDING KEYBOARD LIMITED WARRANTY

Matias Corporation (“Matias”) warrants to the original end user (“Customer”) that these products will be free from defects in workmanship and materials, under normal use, for 1 year from the date of original purchase from Matias or its authorized reseller. Matias’ sole obligation under this express warranty shall be (at Matias’ option and expense) to repair or replace the product or part with a comparable product or part. All products or parts that are replaced become the property of Matias.

LIMITATION OF LIABILITY

To the full extent allowed by law, Matias excludes for itself and its suppliers any liability (whether based in contract or in tort, including negligence) for incidental, consequential, indirect, special or punitive damages of any kind, or for loss of revenue or profits, loss of business, loss of information or data, or other financial loss arising out of or in connection with the sale, installation, maintenance, use, performance, failure, or interruption of this product, even if Matias or its authorized reseller has been advised of the possibility of such damages, and limits its liability to replacement, repair, or refund of the purchase price paid, at Matias’ option. This disclaimer of liability for damages will not be affected if any remedy provided herein shall fail of its essential purpose.

WARRANTY PROCEDURE

- 1** Please contact the Matias Help Desk by e-mail at help@matias.ca or by phone at **(905) 265-8844**, and give a detailed explanation of the problem.
- 2** We will first try to solve your problem by e-mail/phone.
- 3** If e-mail/phone support is not successful or if the item is defective, Matias will assign you an EMA number (Exchange Merchandise Authorization), and send instructions for returning the product for replacement.
- 4** For more information about our Return Policy, please visit our website at: www.matias.ca/returns