

quick setup

1 Connecting the keyboard

Plug the USB 2.0 Keyboard into your computer. Both USB plugs must be connected.



plug for keyboard & USB hub

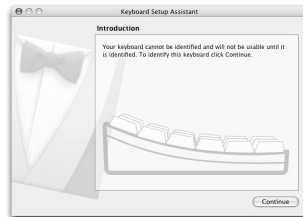
plug for USB 2.0 dock

2

For:
Windows
Linux

Setup is complete.
For more information,
please turn to page 3.

For **Mac OS X 10.4 Tiger**,
this window will appear:



...please turn to page 5

For more information, please visit:

Technical support:

www.usb2keyboard.com/help

Injury prevention and health:

www.usb2keyboard.com/health

Warranty:

www.usb2keyboard.com/warranty

matias corporation

129 Rowntree Dairy Road, Unit #20
Vaughan, Ontario, L4L 6E1
Canada

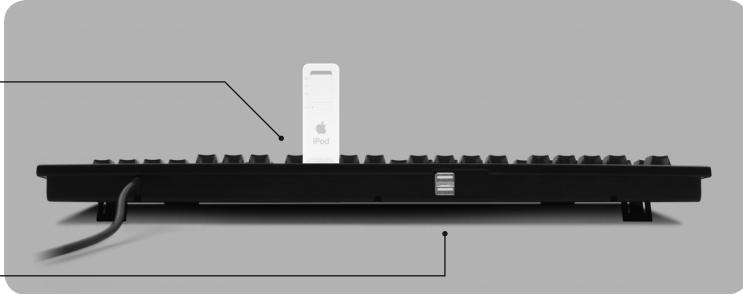
Telephone: 1-905-265-8844

e-mail: info@matias.ca

www.matias.ca

Using the USB ports

The USB 2.0 dock is recommended for connecting Hi-Speed USB devices (iPods, USB flash drives, digital cameras, etc.).



The USB hub ports are recommended for low-speed USB devices (mice, joysticks, etc.).

Using the keyboard on computers with regular USB

The USB 2.0 Keyboard is also compatible with computers that only support regular USB, but your data transfer speeds through the USB 2.0 dock will be slower with regular USB.

If your computer has both USB 2.0 and regular USB ports, make sure that the USB 2.0 dock cable is plugged into a USB 2.0 port, for faster data transfer.

Using the Eject key on Mac OS X

To Eject, simply hold down the F12 key until the Eject symbol appears on the screen.

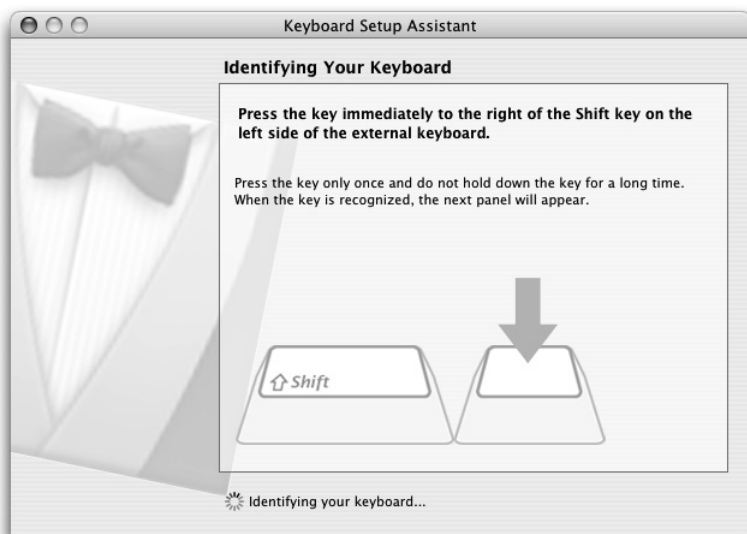
Mac OS X 10.4 Tiger Setup Instructions

When you plug a keyboard in for the first time, the Keyboard Setup Assistant window will appear.

- 1 Click **Continue**.



- 2 Read window instructions, and press key on keyboard as requested.
- 3 Another instruction may follow, requesting another key press. Press key as requested.

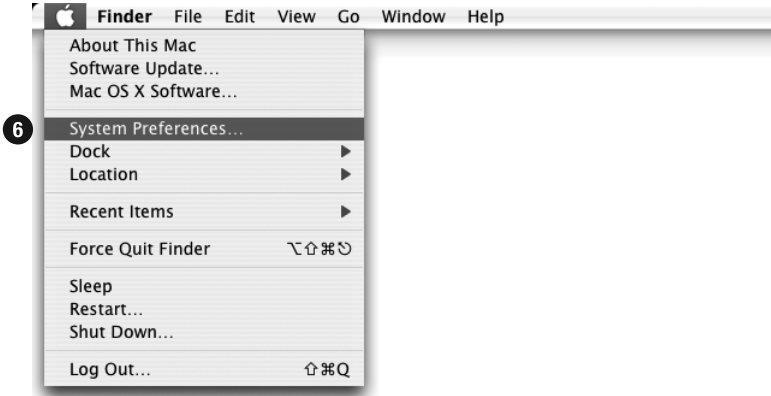


4 Click on **ISO**.

5 Click on **Done**.



6 Open **System Preferences**.

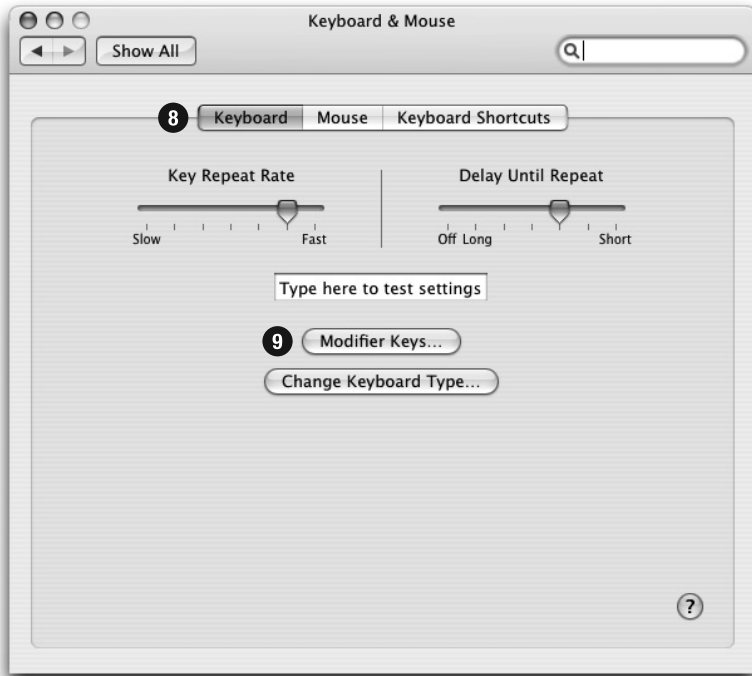


7 Click on **Keyboard & Mouse**.



8 Click on **Keyboard**.

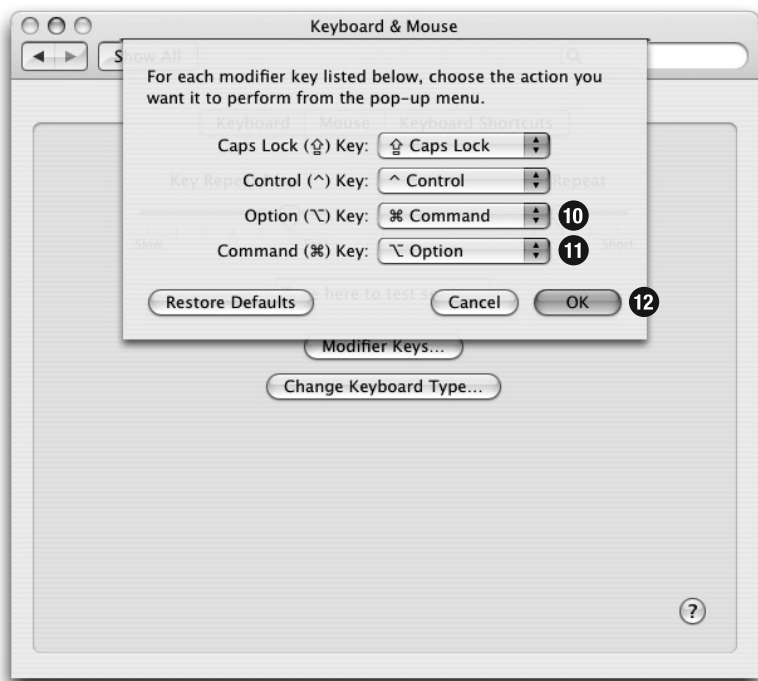
9 Click on **Modifier Keys...**



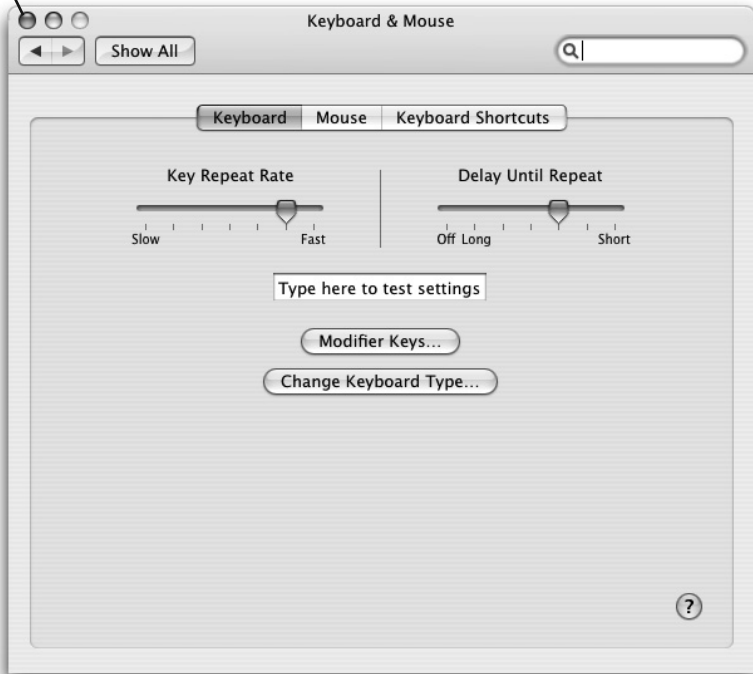
10 Click and select **Command**.

11 Click and select **Option**.

12 Click **OK**.



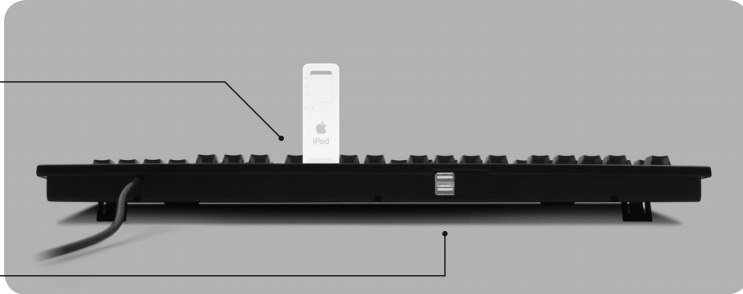
13 Click on red button to close window.



14 Setup is complete.

Using the USB ports

The USB 2.0 dock is recommended for connecting Hi-Speed USB devices (iPods, USB flash drives, digital cameras, etc.).



The USB hub ports are recommended for low-speed USB devices (mice, joysticks, etc.).

Using the keyboard on computers with regular USB

The USB 2.0 Keyboard is also compatible with computers that only support regular USB, but your data transfer speeds through the USB 2.0 dock will be slower with regular USB.

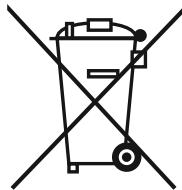
If your computer has both USB 2.0 and regular USB ports, make sure that the USB 2.0 dock cable is plugged into a USB 2.0 port, for faster data transfer.

Using the Eject key on Mac OS X

To Eject, simply hold down the F12 key until the Eject symbol appears on the screen.

Copyright © 2005 Matias Corporation. All rights reserved. USB 2.0 keyboard, Matias, and the Matias logo are trademarks of the Matias Corporation. Other names may also be trademarks and their owners are respectfully acknowledged. Patent Pending. Made in China.

FCC ID: F2Q4NE980NH



Disposal of Waste Equipment by Users in Private Households in the European Union

This symbol on the product or on its packaging indicates that this product must not be disposed of with your other household waste. Instead, it is your responsibility to dispose of your waste equipment by handing it over to a designated collection point for the recycling of waste electrical and electronic equipment. The separate collection and recycling of your waste equipment at the time of disposal will help to conserve natural resources and ensure that it is recycled in a manner that protects human health and the environment. For more information about where you can drop off your waste equipment for recycling, please contact your local city office, your household waste disposal service or the shop where you purchased the product.